

▲ Corporate Data (As of June 29, 2020)

Company Name:	Maxell Holdings, Ltd. https://www2.maxell.co.jp/
Tokyo Headquarters:	21F, Taiyo Life Shinagawa Building, 2-16-2, Konan, Minato-ku, Tokyo 108-8248, Japan
Kyoto Headquarters:	1, Koizumi, Oyamazaki, Oyamazaki-cho, Otokuni-gun, Kyoto 618-8525, Japan
Established:	September 1960
Paid-in Capital:	¥12,203 million
Representative Director:	Keiji Nakamura, President
Number of Employees (As of March 31, 2020):	Consolidated: 5,108
Transfer Agent:	Sumitomo Mitsui Trust Bank, Limited
Independent Auditor:	Ernst & Young ShinNihon LLC

Tagline of Maxell



“Within, the Future” contains the idea that we remain close to people at all times.

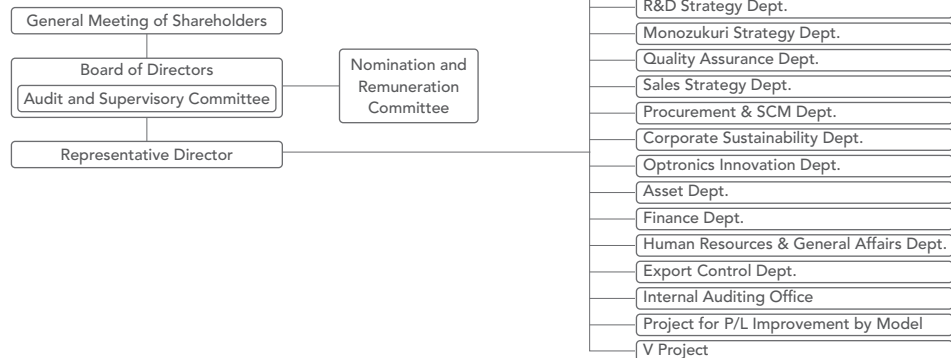
Maxell operates within the future. We have decided our corporate color will be New Maxell Red—a color that evokes the future.

Origin of Company Name

The company name Maxell originates from the brand name “Maxell” (Maximum Capacity Dry Cell = dry cell with the highest performance) created for the dry batteries that constituted its business at the time of foundation.

Maxell Holdings Organization Chart

(As of October 1, 2020)



▲ Stock Information (As of March 31, 2020)

Major Shareholders

	Shareholder	Number of shares (thousand shares)	Percentage of shareholdings (%)
1	Japan Trustee Services Bank, Ltd.	5,496	11.11
2	TAIYO FUND, L.P. (Standing proxy: MUFG Bank, Ltd.)	2,568	5.19
3	The Master Trust Bank of Japan, Ltd.	2,566	5.19
4	SSBTC CLIENT OMNIBUS ACCOUNT	2,049	4.14
5	Nichia Corporation	2,001	4.05
6	TAIYO HANEI FUND, L.P.	1,672	3.38
7	Hitachi, Ltd.	1,603	3.24
8	State Street Bank and Trust Company 505227	1,404	2.84
9	Zeon Corporation	1,311	2.65
10	State Street Bank and Trust Company 505103	1,102	2.23

Notes: 1. The number of shares held by Japan Trustee Services Bank, Ltd. and The Master Trust Bank of Japan, Ltd. is the number of shares held in trust.
2. The percentage of shareholdings is calculated without taking treasury shares (3,863,566 shares) into account.

Breakdown of Shareholders (As of March 31, 2020)

